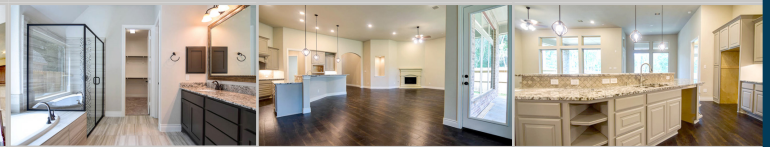
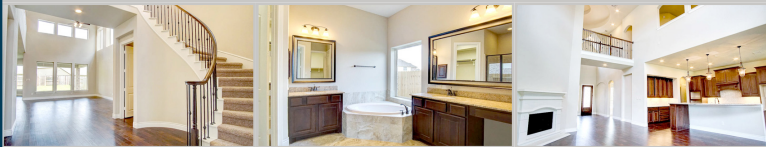


# Inventory Homes in Bridgeland



## 16622 Madison Midway Drive

5 BED | 4 1/2 BATH | 2 STORY | 3 CAR | 3,799 SQ.FT.

WAS \$521,900 | NOW **\$434,900**

## 16623 Madison Midway Drive

4 BED | 4 1/2 BATH | 1 1/2 STORY | 3 CAR | 3,513 SQ.FT.

WAS \$497,900 | NOW **\$469,900**

ADDRESS	PLAN	STORY	BED	BATH	CAR	SQ.FT.	STATUS	WAS	NOW
---------	------	-------	-----	------	-----	--------	--------	-----	-----

16622 Madison Midway Drive	3799-D1	2	5	4 1/2	3	3,799	Ready!	\$529,900	<b>\$434,900</b>
----------------------------	---------	---	---	-------	---	-------	--------	-----------	------------------

2-story home with stone and stucco front elevation features a dramatic rotunda entry with spiral staircase. Wood floors flow throughout the entry, study, kitchen, family and dining rooms. Kitchen with 42-inch raised panel cabinets and stainless-steel built-in appliances is open to the family room with 21-foot ceilings, corner fireplace, and a wall of windows looking out to the 28x18-foot covered patio. Large master suite includes an elegant master bath with corner tub and separate shower, His & Hers vanities and separate walk-in closets. Upstairs are 3 bedrooms, 2 full baths, game room and media room.

16623 Madison Midway Drive	3326-B1	1 1/2	4	4 1/2	3	3,513	Ready!	\$497,900	<b>\$469,900</b>
----------------------------	---------	-------	---	-------	---	-------	--------	-----------	------------------

1 1/2-story home opens to entry and dining room both with 12-foot ceilings and hardwood floors, extended entry with 13-foot ceilings leads to the open kitchen with 42-inch raised panel cabinets, stainless-steel built-in appliances and large island with granite countertops and high-bar seating overlooking the 20x19-foot family room and 12x12-foot casual dining, all with hardwood floors. Back full wall of windows looks out to the huge 33x15-foot covered patio. Master bath features 6-foot garden tub and separate shower with His & Hers vanities and large walk-in closet. Upstairs includes a bedroom, full bath, game room and theater room.

19207 Bullard Creek Drive	3030-C3	1	4	3 1/2	3	3,030	Ready!		<b>\$449,900</b>
---------------------------	---------	---	---	-------	---	-------	--------	--	------------------

1-story home with wood floors and an oval ceiling upon entry. Wood floors also flow throughout the library, family, dining and kitchen breakfast. This showcase kitchen includes gray painted cabinets, granite countertops and stainless steel appliances. An expansive family room with floor to ceiling windows & plenty of room for entertainment gives access to an extended covered patio for relaxing.

19127 Bullard Creek Drive	3546-B2	1 1/2	4	3 1/2 + 1/2	3 1/2	3,546	Ready!		<b>\$489,900</b>
---------------------------	---------	-------	---	-------------	-------	-------	--------	--	------------------

1 1/2-story home features elegant oval entry with tile floor and 13-foot ceiling that opens to the study with hardwood floors. Enormous kitchen with 12-foot ceilings, 42-inch raised panel cabinets and stainless-steel built-in appliances opens to the breakfast room, dining room with hardwood floors, and family room with 14-foot ceilings and fireplace. A full wall of windows looks out to the 18-foot covered patio. Master suite includes a 6-foot garden tub and separate shower with His & Hers vanities. Upstairs features a game room, half bath, and a theater room with surround sound wiring, theater paint, theater carpet and additional insulation.

19203 Bullard Creek Drive	2688-B2	1	3	3 1/2	3	2,688	February		<b>\$438,900</b>
---------------------------	---------	---	---	-------	---	-------	----------	--	------------------

1-story home opens to entry with 12-foot ceilings with hardwood floors that lead to the enormous family room with 12-foot ceilings, corner fireplace and full wall of windows that look out to the large covered patio. The kitchen features 42-inch raised panel cabinets, an oversized curved island with granite countertops and high bar seating with a 12x14-foot casual dining area, all open to the 20x19-foot family room. Master bath includes a 6-foot garden tub and separate shower with His & Hers vanities.

## Texas Size Living

**BIGGER. BETTER.**

**Come See the Difference**



Angel Lindsley

Cell 713-933-9466

Email [alindsley@ravennahomes.com](mailto:alindsley@ravennahomes.com)

### VISIT OUR MODEL HOME

16211 Inca Dove Court

Cypress, Texas 77433

281-758-5064